



## Box Properties

### --Description--

Name:

Type: Vented Box

Shape: Prism, square

### --Box Parameters--

Vb = 4 cu.ft

V(total) = 4.56 cu.ft

Fb = 40.74 Hz

F3 = 32.04 Hz

Fill = none

### --Vents--

No. of Vents = 1

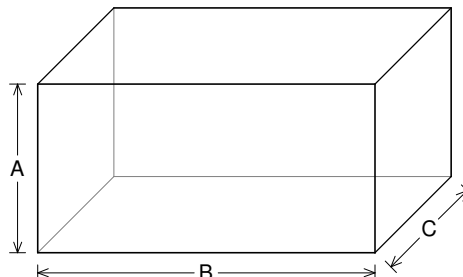
Vent shape = rectangle

Vent ends = one flush

Hv = 12 in

Wv = 2 in

Lv = 7 in



### --External Dimensions--

A = 18 in

B = 36 in

C = 15.34 in

### --Internal Dimensions--

A = 16.5 in

B = 34.5 in

C = 13.84 in

### --Wall Thickness--

Front = 0.75 in

Side = 0.75 in

## Driver Properties

### --Description--

Name: SXX 15 D4

Type: Standard one-way driver

Company: RE Audio (2015)

### --Configuration--

**No. of Drivers = 2**

Mounting = Standard

Wiring = Parallel

Drivers sum coherently = Yes

Dual voice coils = parallel

### --Driver Parameters--

Fs = 44.67 Hz

Qms = 10.22

Vas = 1.311 cu.ft [2.622]

Xmax = 1.1 in

Sd = 128.6 sq.in [257.2]

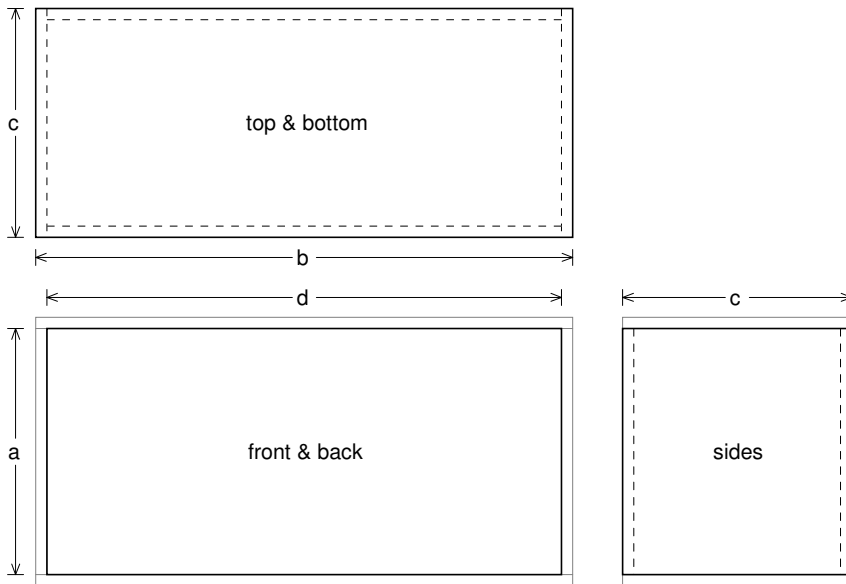
Qes = 0.998

Re = 2.034 ohms [1.017]

Le = 2.268 mH [1.134]

Z = 2.441 ohms [1.22]

Pe = 1200 watts [2400]



### Box Parts

Box Shape: Square Prism

1 Top, 1 Bottom: depth ( $c$ ) = 15.34 in  
width ( $b$ ) = 36, thickness = 0.75 in

1 Front, 1 Back: height ( $a$ ) = 16.5 in  
width ( $d$ ) = 34.5, thickness = 0.75 in

2 Sides: height ( $a$ ) = 16.5 in  
depth ( $c$ ) = 15.34, thickness = 0.75 in

--Driver Mounting--

Mounting: Front

Aim: All drivers face same direction

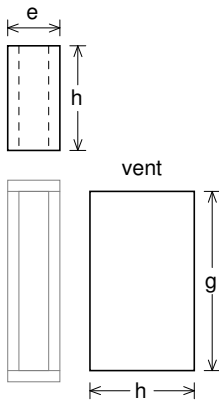
--Vent Parts--

1 Top, 1 Bottom:

width ( $e$ ) = 3.5, length ( $h$ ) = 7 in  
thickness = 0.75 in

2 Sides:

height ( $g$ ) = 12, length ( $h$ ) = 7 in  
thickness = 0.75 in





### Wiring Diagram

